

Date range for all programs was 6/1/11-6/1/13

Permanent Supportive Housing and Shelter Plus Care

Program	% Shelter	% Streets	% AODA	% Mental Health	% Chronic	% No Income	% High Barrier
Couleecap Housing First PHP	43%	29%	36%	100%	64%	57%	55%
State of WI - Rock County Shelter Plus Care: CAI	63%	28%	27%	89%	39%	55%	50%
Walworth County Housing Authority - Hartwell Street Apartments	47%	29%	18%	59%	100%	41%	49%
NEWCAP - SHP Housing First	86%	14%	14%	86%	14%	71%	48%
Starting Points - PLUS Supportive Housing for Men PHP	67%	22%	56%	56%	22%	56%	46%
The Salvation Army of St. Croix (Grace Place) - PSH	96%	0%	40%	48%	28%	56%	45%
Housing Partnership of the Fox Cities -It Takes A Village	74%	11%	32%	95%	42%	5%	43%
Starting Points - PLUS Supportive Housing for Women PHP	81%	0%	50%	81%	6%	6%	38%
Couleecap - New Hope PSH	37%	24%	18%	71%	0%	13%	27%
City of Appleton - Wireworks PSH: Housing Partnership	38%	13%	0%	50%	38%	0%	23%
Richard's Place II PH Project	25%	0%	0%	0%	50%	0%	13%

Supportive Service Only (SSO)

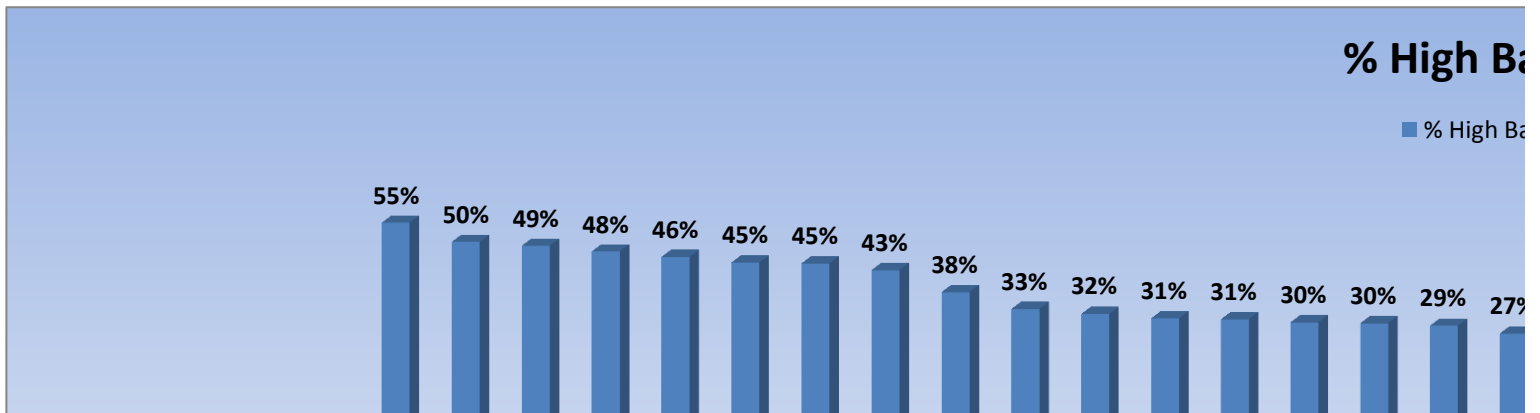
Providers/Grants	% Shelter	% Street	%AODA	% Mental Health	% Chronic	% No Income	% High Barrier
ADVOCAP Homeless SSO	83%	0%	8%	32%	6%	51%	30%
ADVOCAP Fond du Lac SSO	83%	1%	6%	20%	2%	66%	30%
Lakeshore CAP, Inc. – Project Hope	67%	19%	7%	13%	5%	45%	26%
Western Dairyland - Supportive Housing Program: Western Dairyland + ECIHN + City of Eau Claire Housing	58%	6%	2%	8%	2%	28%	17%
Legal Action of WI – Civil Legal Services for the Homeless	37%	1%	1%	16%	1%	38%	16%

Transitional Housing

Providers/Grants	% Shelter	% Street	%AODA	% Mental Health	% Chronic	% No Income	% High Barrier
KHDS KYF Supportive Housing Program	89%	11%	39%	50%	11%	69%	45%
Richard's Place I SHP TH Project	0%	22%	56%	67%	33%	22%	33%
CACSCW Jefferson County TH	66%	7%	22%	32%	0%	66%	32%

KHDS Homeless Youth Project	58%	15%	13%	35%	8%	57%	31%
NWCSA TH	100%	0%	4%	27%	8%	46%	31%
NCCAP - THE BIG TEN	53%	9%	9%	25%	9%	69%	29%
West Central WI - Families in Transition Supportive Housing	96%	0%	1%	17%	0%	43%	26%
NWCSA ABC TH	66%	11%	3%	14%	0%	63%	26%
City of Appleton - Fox Cities Housing Coalition TH: Housing Partnership + ADVOCAP Menasha + TSA-Fox Cities	72%	1%	11%	41%	6%	15%	25%
CAI Rock Walworth Transitional Living Program: CAI + Red Road House	75%	2%	18%	14%	18%	57%	23%
Starting Points - Chippewa County TH	63%	0%	12%	26%	0%	38%	23%
CWCAC Project Chance TH	57%	13%	3%	21%	4%	40%	23%
Family Services of Northeast WI-Brown County THP: Family Services + Forward Services Corp.	91%	3%	57%	57%	14%	34%	23%
ADVOCAP Fond du Lac TH Program	73%	0%	3%	21%	0%	27%	21%
YWCA of the Coulee Region TH	16%	5%	32%	32%	5%	26%	19%
Women & Children's Horizons Transitional Living Program	32%	23%	5%	14%	5%	14%	15%
Forward Service Corporation-New Homeless Continuum	31%	4%	1%	6%	1%	18%	10%
Couleecap TH: Couleecap	12%	10%	0%	7%	0%	8%	6%

Providers/Grants Not Included	TYPE
CAP Services - Transitional Living Project	TH
Hebron House - Jeremy House Safe Haven	SH
State of WI - WI HMIS Project Renewal	HMIS
CAI Rock Walworth Transitional Living Program: Family Services + AFP	TH
Couleecap Transitional Housing: New Horizons	TH
Western Dairyland - Supportive Housing Program: Bolton Refuge House	SSO
Women and Children's Horizon - Transitional Living Project: DV	TH



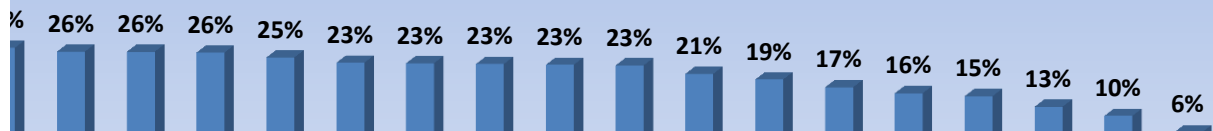
Couleecap Housing First
 CAI Shelter Plus Care
 Walworth
 Newcap Housing First
 SPI Men
 KHDS Supportive Housing
 The Salvation Army of St....
 Housing Partnership-It Takes...
 SPI Women
 Richard's Place
 CACSCW TH Jefferson County
 KHDS Homeless Youth...
 NWCSA Transitional Housing
 ADVOCAP WINN
 ADVOCAP FDL
 NCCAP The Big Ten
 Couleecap New Hope
 WestCAP Supportive H...
 NWCSA A


Providers/Grants	Type	% High Barrier	Number
Couleecap Housing First PHP	PSH	55%	1
State of WI - Rock County Shelter Plus Care: CAI	PSH	50%	2
Walworth County Housing Authority - Hartwell Street Apartments	PSH	49%	3
NEWCAP - SHP Housing First	PSH	48%	4
Starting Points - PLUS Supportive Housing for Men PHP	PSH	46%	5
KHDS KYF Supportive Housing Program	TH	45%	6
The Salvation Army of St. Croix (Grace Place) - PSH	PSH	45%	7
Housing Partnership of the Fox Cities -It Takes A Village	PSH	43%	8
Starting Points - PLUS Supportive Housing for Women PHP	PSH	38%	9
Richard's Place I SHP TH Project	TH	33%	10
CACSCW Jefferson County TH	TH	32%	11
KHDS Homeless Youth Project	TH	31%	12
NWCSA TH	TH	31%	13
ADVOCAP Homeless SSO	SSO	30%	14
ADVOCAP Fond du Lac SSO	SSO	30%	15
NCCAP - THE BIG TEN	TH	29%	16
Couleecap - New Hope PSH	PSH	27%	17
West Central WI - Families in Transition Supportive Housing	TH	26%	18
NWCSA ABC TH	TH	26%	19
Lakeshore CAP, Inc. – Project Hope	SSO	26%	20
City of Appleton - Fox Cities Housing Coalition TH: Housing Partnership + ADVOCAP Menasha + TSA-Fox Cities	TH	25%	21
CAI Rock Walworth Transitional Living Program: CAI + Red Road House	TH	23%	22
Starting Points - Chippewa County TH	TH	23%	23
CWCAC Project Chance TH	TH	23%	24

City of Appleton - Wireworks PSH: Housing Partnership	PSH	23%	25
Family Services of Northeast WI-Brown County THP: Family Services + Forward Services Corp.	TH	23%	26
ADVOCAP Fond du Lac TH Program	TH	21%	27
YWCA of the Coulee Region TH	TH	19%	28
Western Dairyland - Supportive Housing Program: Western Dairyland + ECIHN + City of Eau Claire Housing	SSO	17%	29
Legal Action of WI – Civil Legal Services for the Homeless	SSO	16%	30
Women & Children's Horizons Transitional Living Program	TH	15%	31
Richard's Place II PH Project	PSH	13%	32
Forward Service Corporation-New Homeless Continuum	TH	10%	33
Couleecap TH: Couleecap	TH	6%	34

Carrier

Carrier





Housing	ABC Transitional...	LCCAP	Fox Cities Housing Coalition...	CAI Rock Walworth...	SPI Transitional Housing	CWCAC	Housing Partnership...	Family Services of Northeast...	ADVOCAP FDL Transitional	YWCA of the Coulee Region...	Eau Claire	LAW Pivot	Women & Children's...	Richard's Place	Forward Service...	Coulecap Transitional...
---------	---------------------	-------	---------------------------------	----------------------	--------------------------	-------	------------------------	---------------------------------	--------------------------	------------------------------	------------	-----------	-----------------------	-----------------	--------------------	--------------------------